



ACTUAL SIZE

ADX1M

Micro Bodypack Transmitter

An incredibly small, smooth bodypack with internal antenna for better concealment and more comfortable wear in applications requiring discreet placement, such as theater or broadcast productions.

Why It's Better

- Discreet placement: streamlined design with heat resistance and durability for better concealment and wear
- Audio quality: outstanding signal stability, spectral efficiency, range, and clarity, with adaptive antenna optimized for wear against the body
- Remote control: Diversity ShowLink® enabled for remote transmitter control and automatic interference avoidance

SBC840M

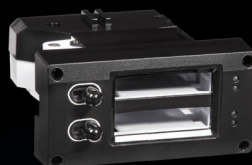
8-Bay Battery Charger



- Charging for up to 8 SB910M batteries
- LEDs indicate charge status and errors
- Storage mode to prepare batteries for long-term storage
- Network-enabled for remote monitoring via Wireless Workbench

SBM910M

Rack Battery Charger



- Charges to 50% capacity within 1 hour using rapid charging function
- Completely charges batteries within 3 hours
- Enables networked visibility and precision metering of charge levels and life cycle statistics

BODYPACK TRANSMITTERS

All Axient Digital bodypack transmitters set a new standard in professional wireless, with features such as breakthrough RF performance, wide tuning up to 184MHz, High Density Mode, and encryption.

ACTUAL SIZE



AD1

Bodypack Transmitter

ADX1

Bodypack Transmitter

ADX1M

Micro Bodypack Transmitter

Weight	5.5 oz	5.0 oz	1.9 oz
Chassis Construction	Metal	Metal	Ultem® PEI
Antenna	External	External	Internal
ShowLink Control*	No	Yes	Yes
Power Levels (mW)**	2 / 10 / 35	2 / 10 / 20 / 40	2 / 10 / 20
Run Time @ 10mW	Up to 9 hrs w/ SB900A rechargeable Over 8 hrs w/ AA	Up to 10 hrs w/ SB910 rechargeable	Up to 7 hrs w/ SB910M rechargeable
Batteries Included	AA (2)	SB910 (2)	SB910M (2)
Talk Switch Compatible	No	Yes	Yes
Charging Options:			
Rack-mounted	SBC-AX	SBC910	SBC910M
Tx docking stations	SBC220	SBC240	n/a
Battery lay-in chargers	SBC800	SBC840	SBC840M
Connector	LEMO or TA4F	LEMO or TA4F	LEMO
Ideal Applications	<ul style="list-style-type: none"> • Long range required • Most challenging RF conditions • LEMO or TA4F microphones • Integration with ULX-D or PSM charging accessories 	<ul style="list-style-type: none"> • Long range required • Most challenging RF conditions • Remote transmitter control required • Talk switch compatibility • LEMO or TA4F microphones 	<ul style="list-style-type: none"> • Pack must be concealed • Pack worn against body • Heavy moisture • Talk switch compatibility • LEMO microphones

*ShowLink provides comprehensive real-time remote control of transmitter parameters. Requires AD610 ShowLink Access Point.

**Region-dependent.